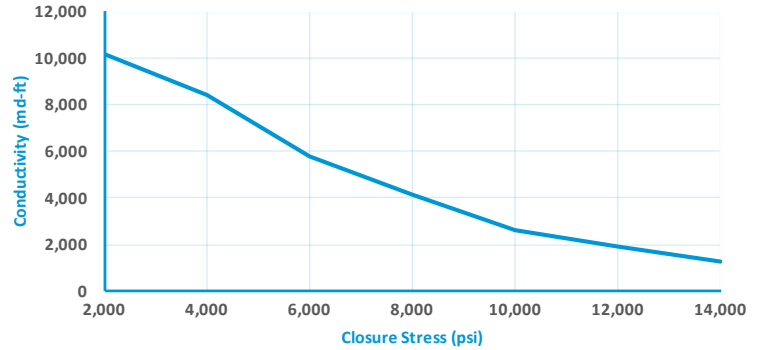


### Reference Conductivity (md-ft), 250°F

Closure Stress (psi)	Conductivity, 2lb/ft <sup>2</sup>
2,000	10,157
4,000	8,433
6,000	5,756
8,000	4,120
10,000	2,638
12,000	1,909
14,000	1,275

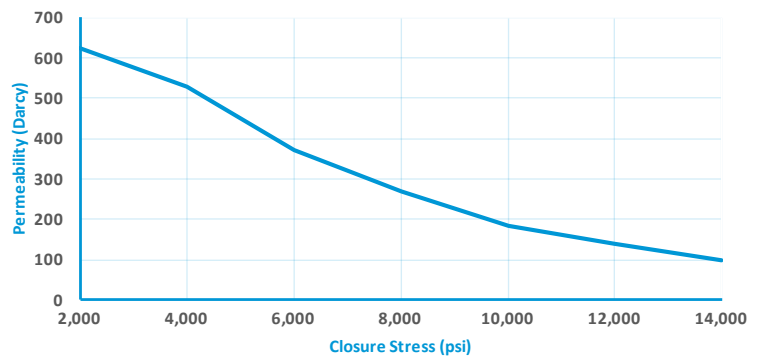
2 lb/ft<sup>2</sup>, 250°F, 2% KCl & Ohio Sandstone



### Reference Permeability (Darcies), 250°F

Closure Stress (psi)	Permeability, 2lb/ft <sup>2</sup>
2,000	625
4,000	530
6,000	371
8,000	269
10,000	184
12,000	139
14,000	98

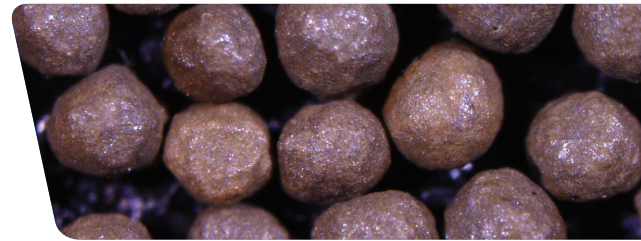
2 lb/ft<sup>2</sup>, 250°F, 2% KCl & Ohio Sandstone



### Physical Properties

Specific Gravity	3.2			
Bulk Density	1.88 g/cc (117 lb/ft <sup>3</sup> )			
Absolute Volume	0.0374 gal/lb			
Acid Solubility, %	2.5			
Roundness/Sphericity (Krumbein & Sloss)	0.9/0.9			
Crush Resistance at Stress (%)	1.4 (7,500 psi)	3.5 (10,000 psi)	4.9 (12,000 psi)	6.8 (14,000 psi)
Median Particle Diameter	0.74 mm			

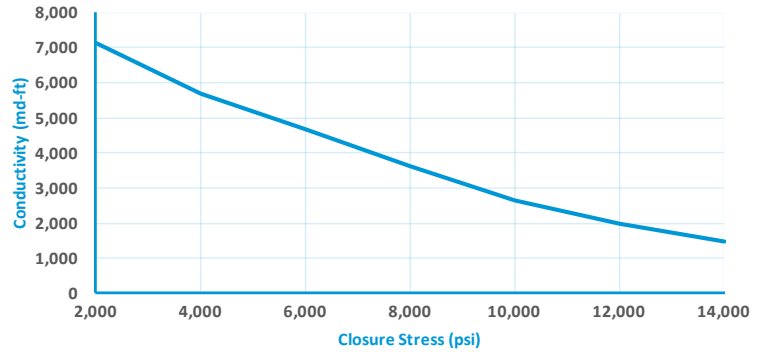
All materials are tested in accordance with API RP-19C & D standards.



### Reference Conductivity (md-ft), 250°F

Closure Stress (psi)	Conductivity, 2lb/ft <sup>2</sup>
2,000	7,125
4,000	5,683
6,000	4,681
8,000	3,639
10,000	2,648
12,000	1,983
14,000	1,463

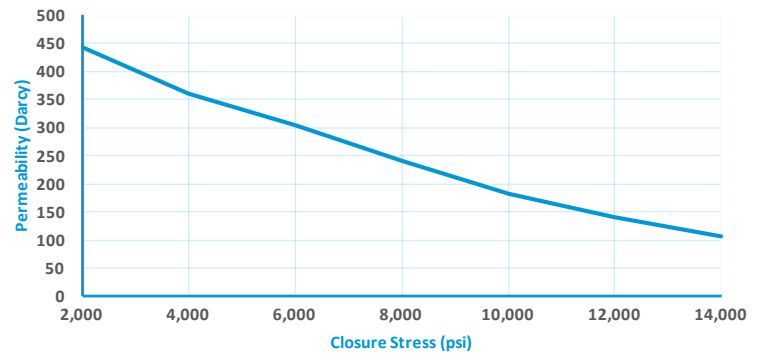
2 lb/ft<sup>2</sup>, 250°F, 2% KCl & Ohio Sandstone



### Reference Permeability (Darcies), 250°F

Closure Stress (psi)	Permeability, 2lb/ft <sup>2</sup>
2,000	443
4,000	361
6,000	304
8,000	241
10,000	182
12,000	141
14,000	108

2 lb/ft<sup>2</sup>, 250°F, 2% KCl & Ohio Sandstone



### Physical Properties

Specific Gravity	3.2		
Bulk Density	1.88 g/cc (117 lb/ft <sup>3</sup> )		
Absolute Volume	0.0374 gal/lb		
Acid Solubility, %	2.5		
Roundness/Sphericity (Krumbein & Sloss)	0.9/0.9		
Crush Resistance at Stress (%)	0.8 (7,500 psi)	2.5 (10,000 psi)	4.0 (12,500 psi)
Median Particle Diameter	0.71 mm		

All materials are tested in accordance with API RP-19C & D standards.

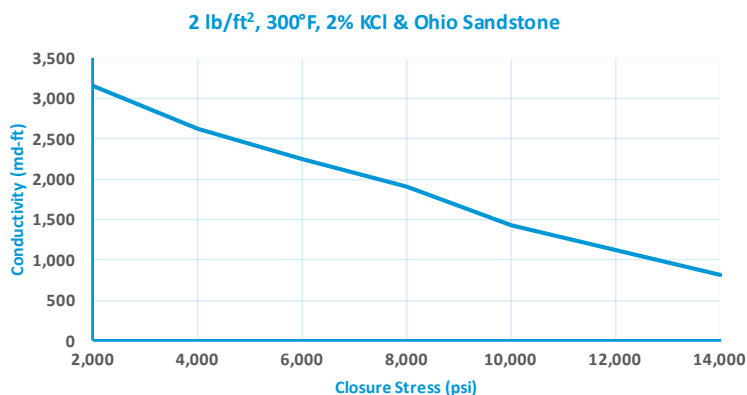
# InterProp® 30/50

Intermediate Strength Proppants Technical Data Sheet



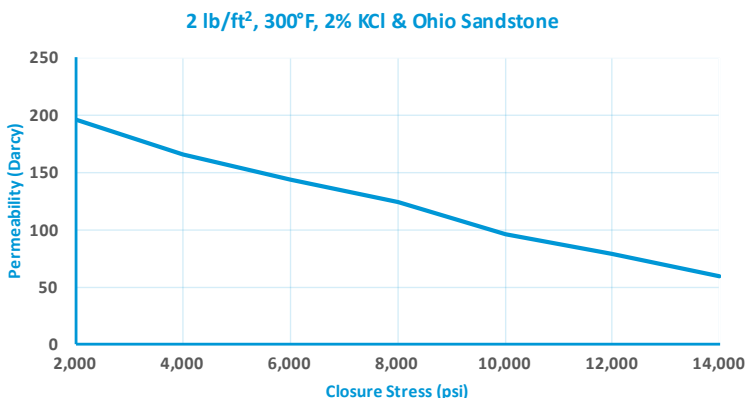
## Reference Conductivity (md-ft), 300°F

Closure Stress (psi)	Conductivity, 2lb/ft <sup>2</sup>
2,000	3,153
4,000	2,620
6,000	2,252
8,000	1,910
10,000	1,431
12,000	1,127
14,000	816



## Reference Permeability (Darcies), 300°F

Closure Stress (psi)	Permeability, 2lb/ft <sup>2</sup>
2,000	196
4,000	166
6,000	144
8,000	124
10,000	96
12,000	79
14,000	59



## Physical Properties

Specific Gravity	3.2		
Bulk Density	1.88 g/cc (117 lb/ft <sup>3</sup> )		
Absolute Volume	0.0374 gal/lb		
Acid Solubility, %	2.5		
Roundness/Sphericity (Krumbein & Sloss)	0.9/0.9		
Crush Resistance at Stress (%)	0.5 (7,500 psi)	1.2 (10,000 psi)	2.6 (12,500 psi)
Median Particle Diameter	0.47 mm		

All materials are tested in accordance with API RP-19C & D standards.

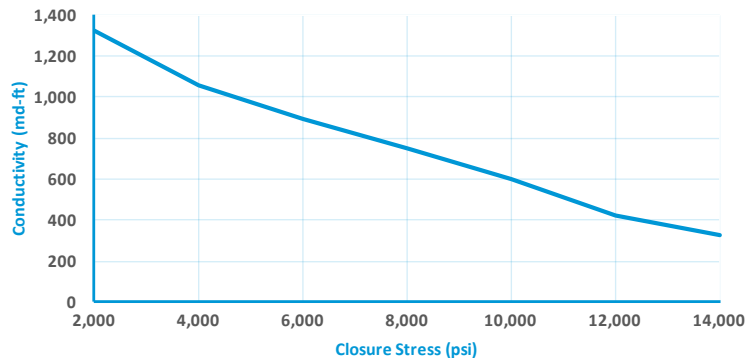




### Reference Conductivity (md-ft), 250°F

Closure Stress (psi)	Conductivity, 2lb/ft <sup>2</sup>
2,000	1,323
4,000	1,056
6,000	895
8,000	749
10,000	601
12,000	423
14,000	329

2 lb/ft<sup>2</sup>, 250°F, 2% KCl & Ohio Sandstone



### Reference Permeability (Darcies), 250°F

Closure Stress (psi)	Permeability, 2lb/ft <sup>2</sup>
2,000	83
4,000	68
6,000	59
8,000	51
10,000	42
12,000	31
14,000	26

2 lb/ft<sup>2</sup>, 250°F, 2% KCl & Ohio Sandstone



### Physical Properties

Specific Gravity	3.2			
Bulk Density	1.88 g/cc (117 lb/ft <sup>3</sup> )			
Absolute Volume	0.0374 gal/lb			
Acid Solubility, %	2.5			
Roundness/Sphericity (Krumbein & Sloss)	0.9/0.9			
Crush Resistance at Stress (%)	0.9 (7,500 psi)	1.7 (10,000 psi)	3.1 (12,500 psi)	4.0 (15,000 psi)
Median Particle Diameter	0.33 mm			

All materials are tested in accordance with API RP-19C & D standards.



#### Saint-Gobain Proppants

6105 Cynamide Road  
 Benton, AR 72015  
 Tel: (501) 557-1300  
 Toll Free: (800) 643-2149  
 email: [proppants@saint-gobain.com](mailto:proppants@saint-gobain.com)  
[proppants.saint-gobain.com](http://proppants.saint-gobain.com)