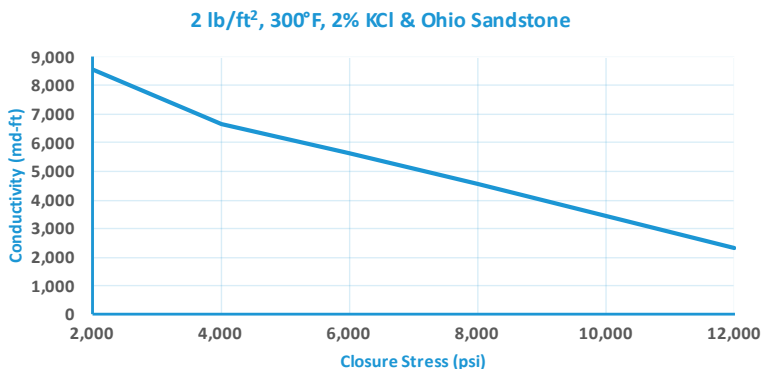


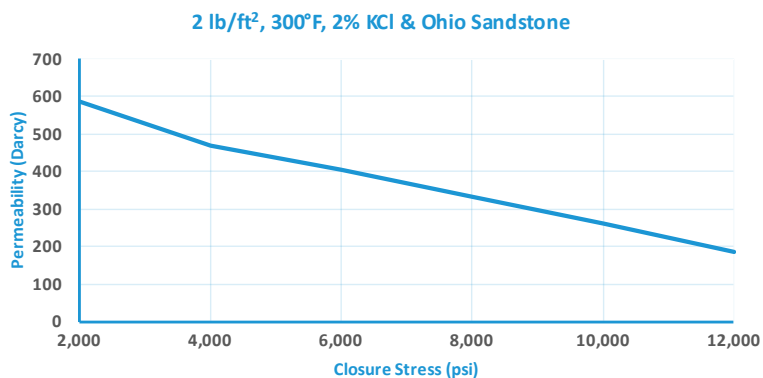
Reference Conductivity (md-ft), 300°F

Closure Stress (psi)	Conductivity, 2lb/ft ²
2,000	8,535
4,000	6,640
6,000	5,649
8,000	4,552
10,000	3,469
12,000	2,348
14,000	1,727



Reference Permeability (Darcies), 300°F

Closure Stress (psi)	Permeability, 2lb/ft ²
2,000	585
4,000	469
6,000	406
8,000	331
10,000	260
12,000	185
14,000	146



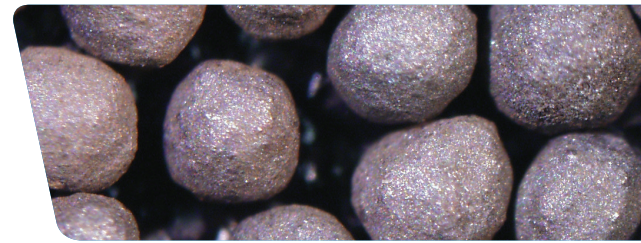
Physical Properties

Specific Gravity	3.3		
Bulk Density	1.97 g/cc (123 lb/ft ³)		
Absolute Volume	0.0363 gal/lb		
Acid Solubility, %	1.9		
Roundness/Sphericity (Krumbein & Sloss)	0.9/0.9		
Crush Resistance at Stress (%)	1.5 (10,000 psi)	3.0 (12,500 psi)	6.0 (15,000 psi)
Median Particle Diameter	0.74 mm		

All materials are tested in accordance with API RP-19C & D standards.

Sintered Bauxite 16/30

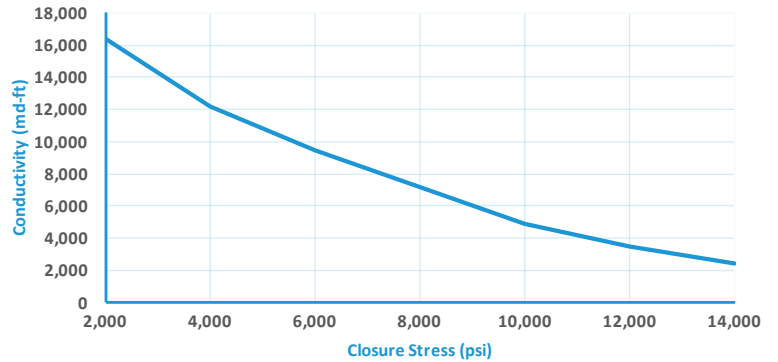
High Strength Proppants Technical Data Sheet



Reference Conductivity (md-ft), 300°F

Closure Stress (psi)	Conductivity, 2lb/ft ²
2,000	16,375
4,000	12,210
6,000	9,505
8,000	7,155
10,000	4,875
12,000	3,515
14,000	2,470

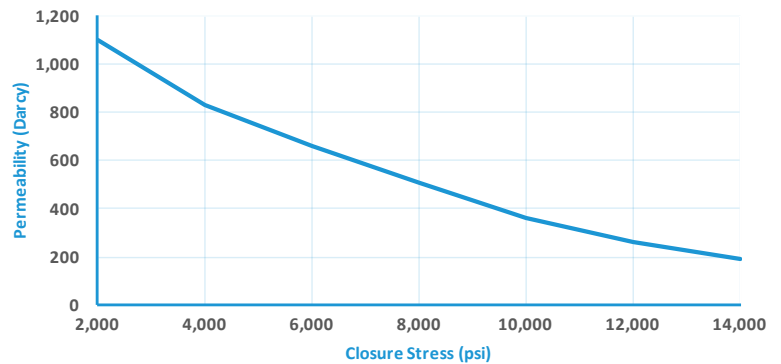
2 lb/ft², 300°F, 2% KCl & Ohio Sandstone



Reference Permeability (Darcies), 300°F

Closure Stress (psi)	Permeability, 2lb/ft ²
2,000	1,098
4,000	833
6,000	663
8,000	511
10,000	361
12,000	265
14,000	195

2 lb/ft², 300°F, 2% KCl & Ohio Sandstone



Physical Properties

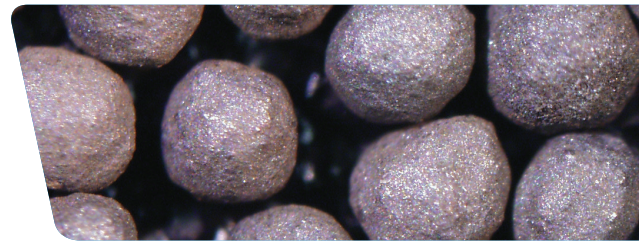
Specific Gravity	3.3		
Bulk Density	1.97 g/cc (123 lb/ft ³)		
Absolute Volume	0.0363 gal/lb		
Acid Solubility, %	1.9		
Roundness/Sphericity (Krumbein & Sloss)	0.9/0.9		
Crush Resistance at Stress (%)	2.5 (10,000 psi)	4.5 (12,500 psi)	9.0 (15,000 psi)
Median Particle Diameter	0.95 mm		

All materials are tested in accordance with API RP-19C & D standards.



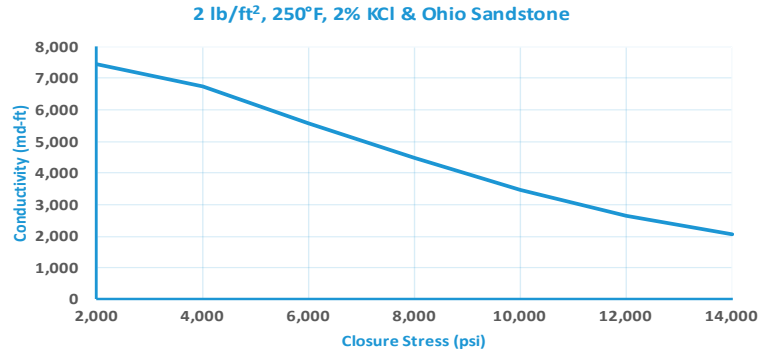
Sintered Bauxite 20/40

High Strength Proppants Technical Data Sheet



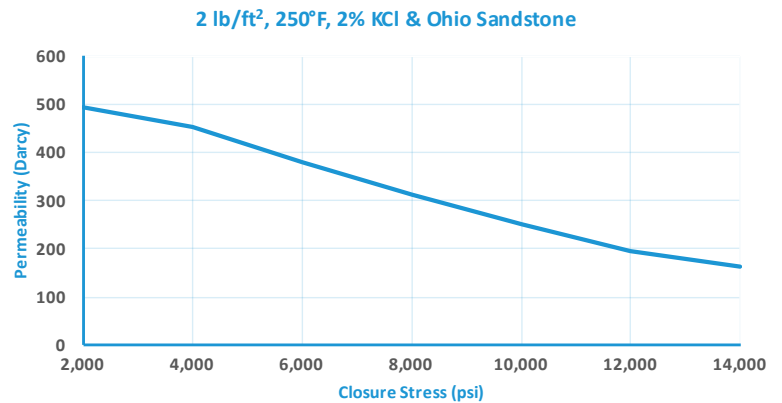
Reference Conductivity (md-ft), 250°F

Closure Stress (psi)	Conductivity, 2lb/ft ²
2,000	7,447
4,000	6,742
6,000	5,581
8,000	4,478
10,000	3,483
12,000	2,640
14,000	2,075



Reference Permeability (Darcies), 250°F

Closure Stress (psi)	Permeability, 2lb/ft ²
2,000	494
4,000	452
6,000	381
8,000	312
10,000	250
12,000	197
14,000	162



Physical Properties

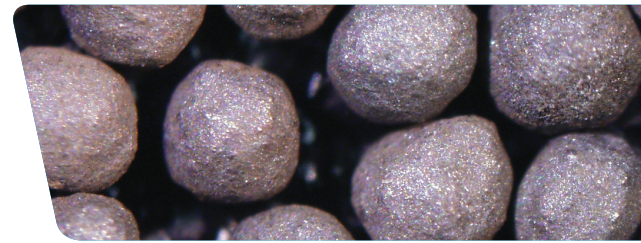
Specific Gravity	3.3		
Bulk Density	1.97 g/cc (123 lb/ft ³)		
Absolute Volume	0.0363 gal/lb		
Acid Solubility, %	1.9		
Roundness/Sphericity (Krumbein & Sloss)	0.9/0.9		
Crush Resistance at Stress (%)	1.2 (10,000 psi)	2.2 (12,500 psi)	4.0 (15,000 psi)
Median Particle Diameter	0.71 mm		

All materials are tested in accordance with API RP-19C & D standards.



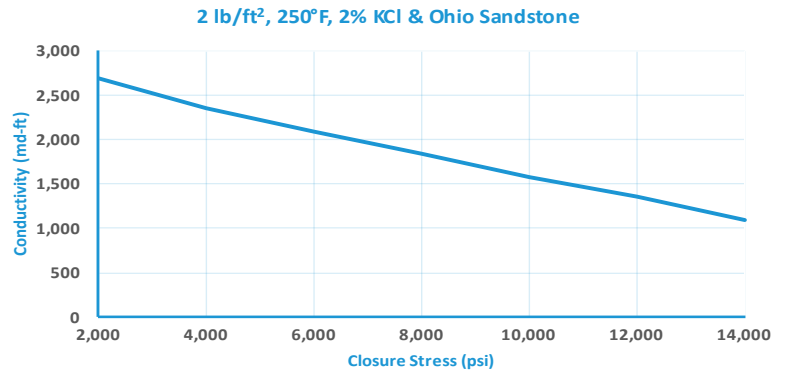
Sintered Bauxite 30/50

High Strength Proppants Technical Data Sheet



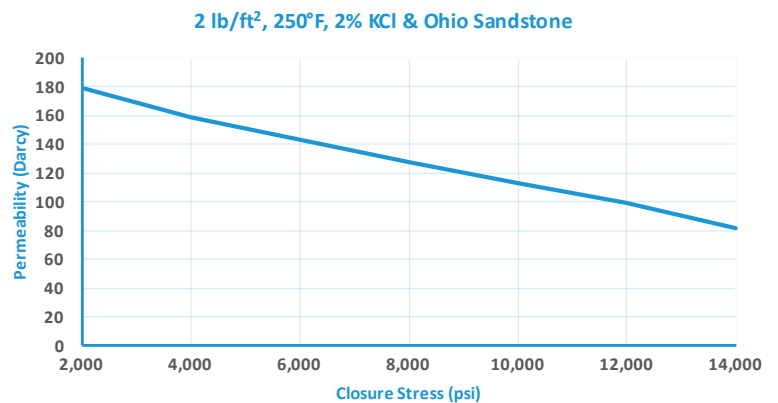
Reference Conductivity (md-ft), 250°F

Closure Stress (psi)	Conductivity, 2lb/ft ²
2,000	2,683
4,000	2,354
6,000	2,084
8,000	1,847
10,000	1,584
12,000	1,364
14,000	1,099



Reference Permeability (Darcies), 250°F

Closure Stress (psi)	Permeability, 2lb/ft ²
2,000	179
4,000	159
6,000	143
8,000	128
10,000	113
12,000	99
14,000	82



Physical Properties

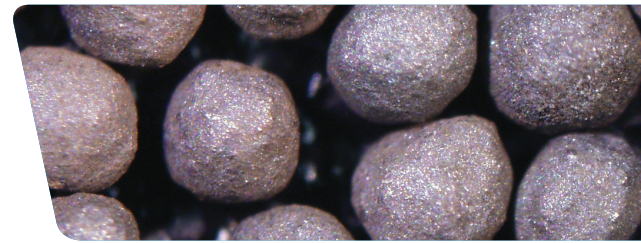
Specific Gravity	3.3		
Bulk Density	1.97 g/cc (123 lb/ft ³)		
Absolute Volume	0.0363 gal/lb		
Acid Solubility, %	1.9		
Roundness/Sphericity (Krumbein & Sloss)	0.9/0.9		
Crush Resistance at Stress (%)	0.6 (10,000 psi)	1.0 (12,500 psi)	1.5 (15,000 psi)
Median Particle Diameter	0.47 mm		

All materials are tested in accordance with API RP-19C & D standards.



Sintered Bauxite 40/80

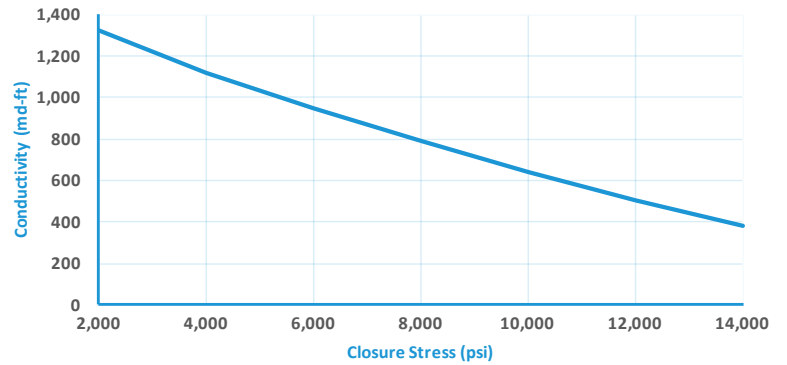
High Strength Proppants Technical Data Sheet



Reference Conductivity (md-ft), 250°F

Closure Stress (psi)	Conductivity, 2lb/ft ²
2,000	1,324
4,000	1,118
6,000	947
8,000	792
10,000	642
12,000	501
14,000	379

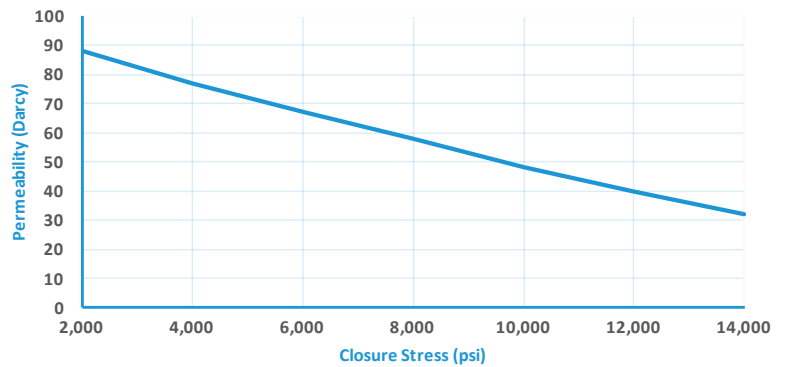
2 lb/ft², 250°F, 2% KCl & Ohio Sandstone



Reference Permeability (Darcies), 250°F

Closure Stress (psi)	Permeability, 2lb/ft ²
2,000	88
4,000	77
6,000	67
8,000	58
10,000	48
12,000	40
14,000	32

2 lb/ft², 250°F, 2% KCl & Ohio Sandstone



Physical Properties

Specific Gravity	3.3		
Bulk Density	1.97 g/cc (123 lb/ft ³)		
Absolute Volume	0.0363 gal/lb		
Acid Solubility, %	1.9		
Roundness/Sphericity (Krumbein & Sloss)	0.9/0.9		
Crush Resistance at Stress (%)	0.5 (10,000 psi)	0.9 (12,500 psi)	2.1 (15,000 psi)
Median Particle Diameter	0.33 mm		

All materials are tested in accordance with API RP-19C & D standards.



Saint-Gobain Proppants

6105 Cynamide Road
Benton, AR 72015
Tel: (501) 557-1300
Toll Free: (800) 643-2149
email: proppants@saint-gobain.com
proppants.saint-gobain.com